



Charlotte Pass
SNOW RESORT

HERITAGE SIGNIFICANCE REPORT GUTHRIES HIGHT SPEED POMA

October 2023

LOCATION: CHARLOTTE PASS SNOW RESORT



Department of Planning
Housing and Infrastructure

Issued under the Environmental Planning and Assessment Act 1979

Approved Application No DA 22/12013

Granted on the 29 February 2024

Signed D James

Sheet No 10 of 60



ASSESSING THE HERITAGE SIGNIFICANCE OF GUTHRIES HIGH SPEED POMA

Assessment Report

Composed by Angela Murdoch

Charlotte Pass Snow Resort

Contents

1. INTRODUCTION	4
1.1 Charlotte Pass Introduction.....	4
1.2 Heritage Study.....	6
1.3 Description of Place and Setting	7
2. THE EVOLUTION AND DETAILS	12
2.2 Archaeological Potential	12
2.3 Community And/or Key Stakeholder Values Over Time	13
2.4 Oral Histories.....	13
2.5 Documentation And Analysis Of Infrastructure	16
3. Comparative Analysis of Guthries Poma	17
3.1 Guthries Poma V Other Ski Lifts at Charlotte Pass.....	17
3.2 Guthries Poma V Historic Ski Lifts in KNP	17
3.3 Statewide Comparisons	17
3.4 Importance in a Local and NSW Context	17
4. ASSESSING SIGNIFICANCE	18
4.1 Historical Significance	18
4.2 Associative Significance	18
4.3 Aesthetic Significance	18
4.4 Scientific Significance	18
4.5 Social Significance	18
4.6 Rarity or Representativeness	19
4.7 Potential Research Significance	19
5. LEVEL OF HERITAGE SIGNIFICANCE	20
5.1 Level of Heritage Significance: Local (within a local context)	20
5.2 A Guide for Analysis Gradings of Significance.....	20
6. STATEMENT OF HERITAGE SIGNIFICANCE	22
6.1 Historical Significance	22
6.2 Associative Significance	22
6.3 Aesthetic Significance	22
6.4 Social Significance.....	22
6.5 Rarity or Representativeness.....	22
6.6 Potential Research Significance	22
6.7 State of Significance Local (within a local context).....	22
7. CONCLUSION	24
REFERENCES	26

1. INTRODUCTION

1.1 Charlotte Pass Introduction

Skiing enthusiasts and scholars alike have long been captivated by the enchanting history of Charlotte Pass in Australia. Nestled in the Snowy Mountains, has witnessed a remarkable evolution over the years, shaping the nation's skiing landscape. In the midst of this history, we delve into a significant aspect of the Charlotte Pass story in this report—the Guthries High-Speed Poma. Our purpose is to thoroughly assess any historical significance of this particular ski lift, and address the question of whether it holds any notable historical value.

Throughout its storied history, Charlotte Pass has seen various skiing infrastructure, all contributing to its unique character and appeal. From the development of the iconic Kosciuszko Chalet Hotel, the resort's history is steeped in a tradition of resilience, growth, and adaptation. The Guthries High-Speed Poma, however, stands as a point of intrigue in this narrative. While many artifacts and structures have been celebrated for their historical value, this report aims to critically evaluate whether the Guthries High-Speed Poma merits a place in this esteemed pantheon of historical significance.

Our investigation will involve an analysis of the Poma's role in the development of Charlotte Pass, and its place in the broader context of skiing history in Australia. We will explore the practical and cultural aspects associated with this piece of skiing infrastructure, as well as seek insights from experts and enthusiasts to provide a well-rounded assessment of its historical worth. Through this report, we hope to shed light on the Guthries High-Speed Poma's place within Charlotte Pass Snow Resort and its value, offering a balanced perspective in regards to historical significance

Ski Lifts at Charlotte Pass

While the resort's beauty is enchanting, our exploration would be incomplete without delving into the remarkable history and significance of the ski lifts that have played a pivotal role in shaping the skiing experience at Charlotte Pass.

In the early 20th century, intrepid explorers and skiing pioneers discovered more than just challenging slopes within the protected embrace of a little valley at Charlotte's Pass. They unearthed something extraordinary—an incredible gateway to the southern end of the Main Range. Recognising the potential for creating a winter haven, they lobbied the New South Wales Government Tourism Bureau (NSWGTB) to develop accommodation at Charlotte's Pass.

The journey to the establishment of this alpine oasis was slow and gradual, but an unfortunate tragedy in 1928, known as the Seaman/Hayes incident, spurred the NSWGTB into action. Laurie Seaman and Evan Hayes lost their lives in the treacherous weather atop Mt Kosciuszko, highlighting the pressing need for improved facilities and better access for search and rescue operations. It became evident that Charlotte Pass, with its strategic location, could have been a more efficient base for search and rescue efforts than the Hotel Kosciuszko.

In 1930, the NSWGTB responded to this need by constructing the first Chalet at Charlotte's Pass, marking the dawn of a new era for winter sports in the region. The Chalet underwent several expansions before being tragically consumed by flames in 1938. Undaunted by adversity, it was rebuilt for the 1939 season. To augment the accommodations, the Ski Club of Australia Annexe was added in 1940, connected to the Chalet by an enclosed overhead walkway.

Notably, in 1935, the NSWGTB introduced Australia to its first overseas ski instructor, Ernst Skardarasy, hailing from Zürs, Austria. Ernst's presence enriched the skiing experience, as he imparted his wisdom to beginners at the Hotel Kosciuszko and guided advanced skiers at the Chalet for three years.

In 1938, the NSWGTB continued to innovate by installing the first large ski tow in Australia at the Chalet. Resembling a modern T-bar, it featured a steel cable passing over pulleys suspended from seven sturdy wooden towers. This cable carried J-bars, an innovation that further enhanced the skiing experience.

For nearly three decades, the Chalet stood as the epi-center of skiing in New South Wales. It played host to a myriad of state, national, and international races, showcasing the prowess of both alpine and cross-country skiers.

As the years passed, private enterprise breathed new life into the Chalet when, in 1962, the NSWGTB leased it to Kosciuszko Chalet Ltd. Ownership has since changed hands, with Charlotte Pass Resort Ltd taking the reins in 2007. Charlotte's Pass, once a solitary outpost, has evolved into a charming village, now home to one hotel, two commercial lodges, and ten ski clubs.

Although the rise of neighbouring resorts offered greater variety of terrain and steeper slopes, combined with easier access, and Charlotte Pass has seen changes in its position within the skiing landscape, it still holds an irreplaceable place in the hearts of many. As a wonderful resort for beginners and intermediate skiers and an unmatched base for ski touring, Charlotte Pass continues to attract those seeking alpine adventure.

Day Guests and Overnight Guests

Charlotte Pass welcomes a diverse array of visitors, catering to both day guests and overnight guests. Day guests flock to the resort to enjoy the slopes. For those seeking a more immersive experience, overnight accommodations offer a cozy haven amid the snow-covered mountains. The charm of Charlotte Pass lies in its ability to cater to various preferences, ensuring that everyone, from the day-tripper to the avid snow sport enthusiast.

Kosciuszko Chalet Hotel (Heritage Significance)

The Kosciuszko Chalet Hotel stands as the only iconic edifice within Charlotte Pass, brimming with heritage significance. Constructed in 1939, this establishment has been the heart of the resort for generations, bearing witness to the evolving trends and traditions of skiing in Australia. The Kosciuszko Chalet Hotel is more than just a place to rest; it's a living testament to the enduring spirit of the skiing community, its architectural grandeur, and its historical importance to the region. Its unique blend of charm and heritage has made it a beloved and cherished landmark, offering not only comfortable lodging but also a glimpse into the past.

Stillwell Hotel, Lucy Lodge, and 10 Independently Operated Lodges

In addition to the Kosciuszko Chalet Hotel, Charlotte Pass boasts a diverse range of accommodations, catering to the preferences and budgets of its visitors, none of which have any historical significance. The resort has an array of ten independently operated lodges, each offering its own unique character and style.

1.2 Heritage Study

In the early 1930s, the sport began to gain traction, and a significant milestone was reached with the construction of a 38-bed Chalet at Charlotte Pass in 1930. Despite the devastating setback, the resilience of the skiing community prevailed, and in 1939, the magnificent Kosciuszko Chalet Hotel was erected on the same site, heralding a new era for the Charlotte Pass Snow Resort. This establishment would go on to become the enduring heart of the resort, welcoming countless skiers and visitors over the years.

The historical landscape of Charlotte Pass is notably anchored by the iconic Kosciuszko Chalet, an architectural marvel that stands as the sole building of paramount historical significance within the resort. This designation is consistently affirmed by a wealth of documented resources, underscoring its unique role in the annals of alpine heritage. The Chalet, through numerous historical accounts, photographs, and archives, emerges as a timeless symbol of the area's rich past and has been celebrated for its pivotal contributions to the development and charm of Charlotte Pass. Its standing as the only building of substantial historical worth within these resources is a testament to its enduring legacy as an emblematic structure in the alpine history of Australia.

Notably, in contrast to the well-documented historical significance of the Kosciuszko Chalet, Guthries Poma is conspicuously absent from any such historical resources, with no recognition of its historical worth, further emphasising the Chalet's singular stature in the preservation of Charlotte Pass's alpine history.

1.3 Description of Place and Setting

The Guthries High-Speed Poma at Charlotte Pass is strategically situated within the ski resort's trail network, enhancing accessibility and convenience for skiers and snow sports enthusiasts.

Located near the heart of the resort, the Guthries High-Speed Poma can typically be found in close proximity to the central hub, making it easily accessible to visitors. This prime location ensures that skiers can efficiently access a variety of trails and terrains, facilitating both intermediate and experienced skiers in their exploration of the slopes. Its central location within the resort's trail system serves as a pivotal point, enabling skiers to navigate the resort's varied terrains with ease and efficiency.

To provide a clear reference to the location of the Guthries High-Speed Poma, please see *Image 1*, which is the current trail map. In this image, the placement of the Guthries High-Speed Poma within the trail network is highlighted, allowing you to visually pinpoint its strategic location.

In *Image 2*, a visual representation of the Guthries High-Speed Poma is provided, providing an insightful six-maps view with the lift line thoughtfully highlighted.

In *Image 3 and Image 4*, are imaged of riding the Guthries High-Speed Poma.

In *Image 5 and Image 6*, you'll find a view of the runs available at Charlotte Pass from Guthries. This visual guide showcases the terrain, from groomed trails for skiers and snowboarders of all levels to the more challenging routes for those seeking an adrenaline rush. It's a valuable area in regards to terrain that it makes available. It provides a glimpse of the off-piste terrain at Charlotte Pass. Here, adventurous skiers and snowboarders can venture beyond the groomed trails and into the unspoiled snow areas.

Image 1



Image 2

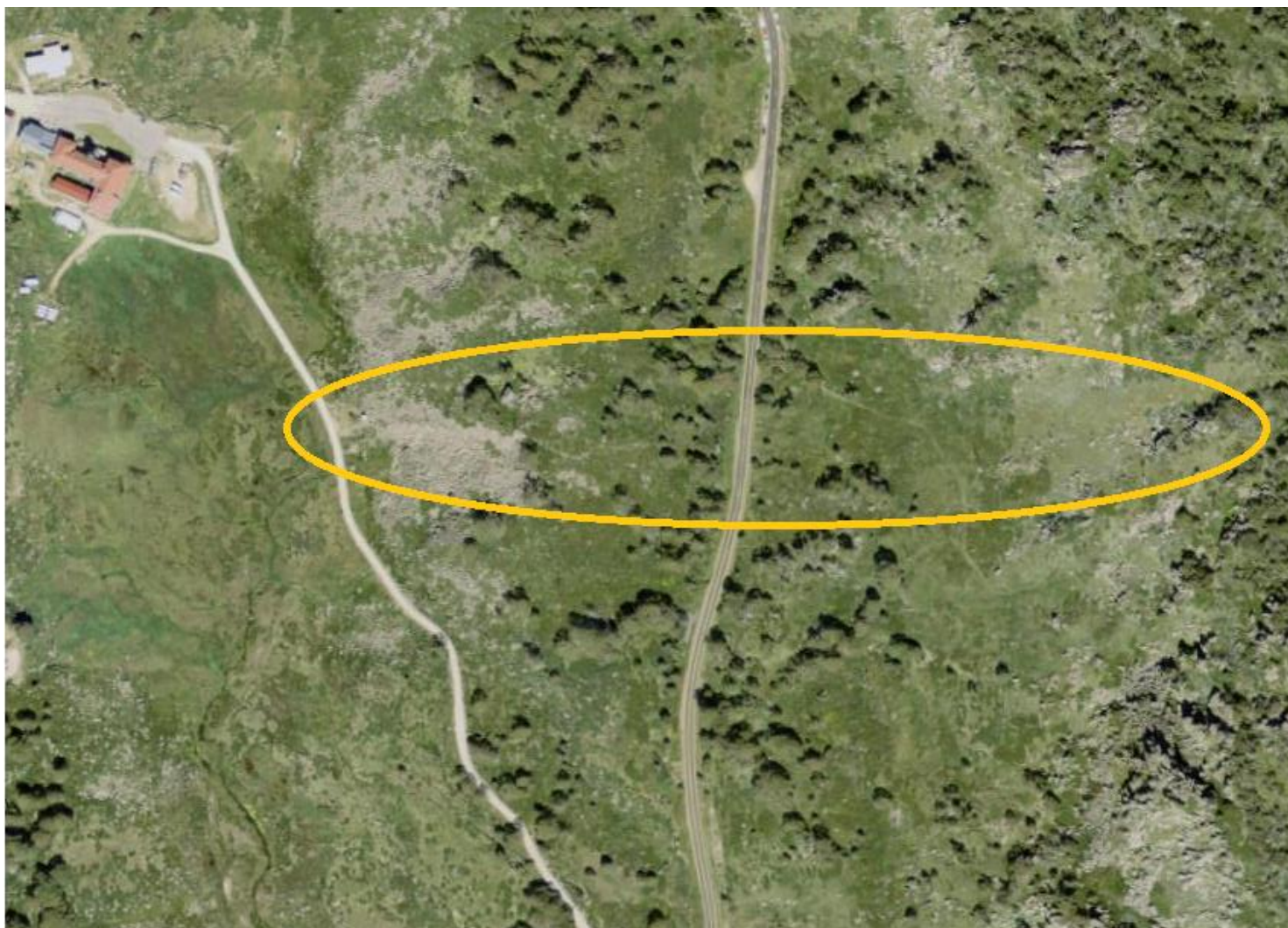


Image 3



Image 4



Image 5



Image 6



2. THE EVOLUTION AND DETAILS

2.2 Archaeological Potential

As part of this report, we have collected a wide spectrum of information, ensuring a holistic evaluation of the place or object in question. Our research has encompassed the following key aspects:

- **Archaeological Potential:** We've delved into the archaeological potential of the site, examining both its Aboriginal heritage and post-contact history.
- **Community and Stakeholder Values:** Our inquiry extends to understanding the evolving values, associations, and connections that communities and key stakeholders have held with this place or object over time.
- **Oral Histories:** We've tapped into the invaluable oral histories passed down through generations by individuals and communities associated with the place or object.
- **Physical Documentation and Analysis:** When applicable, we have scrutinized the physical attributes and material fabric of the place or object, providing a tangible perspective in addition to intangible values.

This thorough investigation has involved primary research, targeted consultations with relevant knowledge holders, and, where necessary, on-site physical investigations. By embracing these multifaceted research approaches, we aim to offer a comprehensive understanding of the place or object in question.

In consideration for this development, particularly the area associated with the proposed works involving the installation of new lift. The evolution of this place has seen it transform into a thriving snow resort catering to skiers and enthusiasts.

The activities associated with the proposed works do involve ground disturbance through excavation for the footings of the new lift towers. It's essential to note that no trees, whether culturally modified or otherwise, are intended to be removed as a result of these works.

Regarding the presence of Aboriginal objects, a search of the Aboriginal Heritage Information Management System (AHIMS) for Charlotte Pass Snow Resort, including the site of the proposed works, was conducted and yielded no relevant confirmed site records. Moreover, based on the other sources of information known to Charlotte Pass Snow Resort, there is no indication that Aboriginal objects are likely to be present in the areas where the proposed development is scheduled.

While the work is not in proximity to caves, rock shelters, cliffs, or granite tors that might historically have been utilised by Aboriginal people, it is located near waters (Spencers Creek) and on the Mount Guthrie ridgeline forming the resort. These features can sometimes indicate greater archaeological potential, but the assessment concludes that there is low potential for Aboriginal objects to be uncovered.

CPSR emphasises a protocol to ensure the protection of potential Aboriginal objects during the project. All staff involved will be trained to halt work immediately if any Aboriginal objects are uncovered. The National Parks and Wildlife Service (NPWS) will be contacted for site assessment. This protocol demonstrates CPSR's commitment to safeguarding potential heritage findings.

In summary, the proposed works include ground disturbance but are not expected to impact Aboriginal objects. The site's low potential for archaeological findings is addressed through a well-defined finds protocol, emphasising the preservation of any potential Aboriginal objects.

2.3 Community And/or Key Stakeholder Values Over Time

The Guthries High-Speed Poma, built in 1963 at Charlotte Pass, has remained steadfast in its purpose and function since its inception. Throughout the years, its primary use has been to facilitate recreational skiing during the winter season.

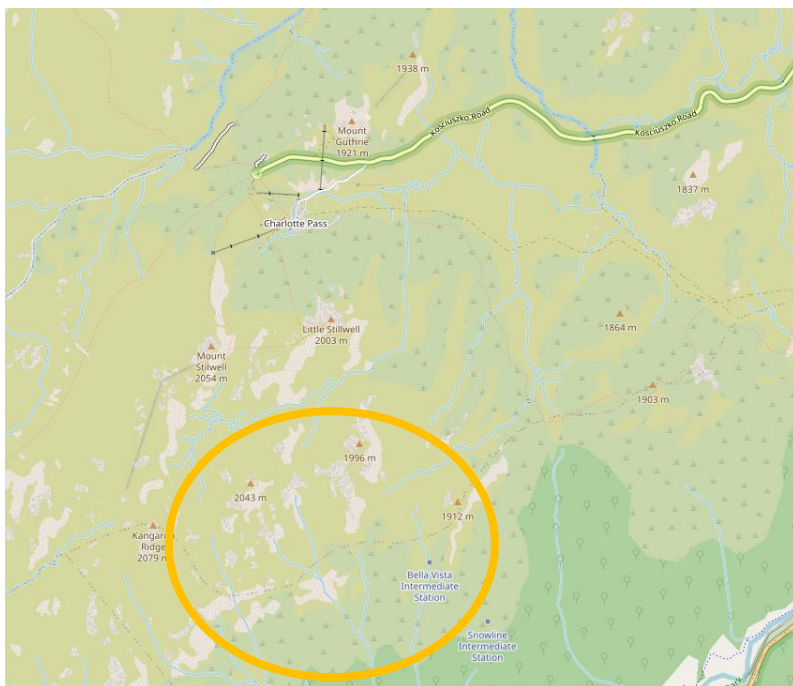
What sets the Guthries Poma apart is the access it provides to a terrain that is particularly appreciated by intermediate and advanced skiers. It serves as a gateway to a diverse range of trails and terrains, making it a beloved companion for those who relish the thrill of carving through the snow-covered slopes.

In terms of its historical associations, it's worth noting that the Guthries Poma has not played a direct role in documented historical events. Most significant events within the context of the Charlotte Pass region have occurred on the road connecting Perisher and Charlotte Pass.

As a side note these of where these historical events transpired, please refer to *Image 7*, as it provides an overview of the general area in which these significant skiing competitions took place.

It's important to note that this area is not situated near the Guthries Poma or Mt Guthries but holds its own historical significance, showcasing the broader heritage of Charlotte Pass Snow Resort as a hub for skiing excellence and international competitions in the early 1930s.

Image 7



Consistent emphasis is placed on the fact that Guthries High Speed Poma lacks any presence within the NPWS Section 170 Heritage Register, and does not have any inclusion in the State Environmental Planning Policy (SEPP) in the context of heritage significance.

2.4 Oral Histories

Within the tapestry of Charlotte Pass's history, oral accounts from individuals who have dedicated themselves to preserving the resort's heritage play a pivotal role. Among these passionate stewards of history, one prominent figure stands out: Rick Walkon. His journey with Charlotte Pass is not merely a footnote but a profound commitment to collecting and sharing the stories that have shaped this iconic winter wonderland.

Rick's involvement spans a range of roles, from lift operator to summer caretaker, ski instructor, and lodge manager. His connection to Charlotte Pass runs deep, making him an invaluable source for preserving the oral history of the region. Rick's journey has been marked by his book, 'Skiing Off The Roof,'. In this section, we delve into the oral histories surrounding Guthries Poma, drawing from Rick's invaluable contributions to the narrative of Charlotte Pass.

Despite the rich historical tapestry that envelops Charlotte Pass and the surrounding skiing landscape, the Guthries Poma occupies a relatively minor role in the annals of the written history. This modest presence is reflected in the limited mentions of the Guthries Poma within the pages 'Skiing Off The Roof.' In this oral history, the Guthries Poma garners just two brief mentions, serving to underscore its unassuming status as an item with a lack historical significance.

The first mention, harking back to the early 1960s, notes the construction of the Guthries Poma as one of three lifts built during 1963 and 1964 to accommodate the needs of Charlotte Pass regulars and to compete with the emerging resorts. Its role was to provide skiers access to the slopes of Mount Guthrie.

The second mention, more than five decades later, signifies the end of an era for the Guthries Poma. In 2020, Kevin Blyton, owner of Charlotte Pass and notable figure in its history, announced plans to retire the aging surface lift, which had dutifully served skiers for over 50 years.

In light of these mentions, it's apparent that the Guthries Poma holds a place in the collective memory of Charlotte Pass, having faithfully served skiers for decades. However, its historical significance is lacking, mainly serving as a means to access the slopes and contributing to the overall skiing experience rather than as a central figure in the resort's history.

The *Australian Ski Lift Directory*, a repository of information regarding ski lifts and passenger ropeways across the country, offers a similar perspective on the lifts that have graced the slopes of Charlotte Pass. In Section 19 of the directory, readers can find a trove of data covering nearly 500 ski lifts and passenger ropeways that have operated in Australia.

Specifically, this section delves into several dozen lifts situated away from the traditional snowfields, including those at Charlotte Pass.

Readers of the *Australian Ski Lift Directory* can also find brief summaries of the companies responsible for crafting these lifts, as well as details about the diverse types of lifts that have played a role in the Australian skiing landscape. While this information is not necessarily accurate (Guthries is incorrect) it does provide a valuable resource to serve as a window into the history of skiing at Charlotte Pass, unravelling the story of the lifts that have carried generations of skiers.

Table 1 offers an insightful overview of the lifts at Charlotte Pass Snow Resort, including Guthries Poma. This resource provides a detailed account of the lifts that have transported skiers at Charlotte Pass, making it a valuable reference for enthusiasts and a guide for historical significance review.

Table 1

NAME	TYPE	MANUFACTURER	OPERATED	LENGTH/VERT	LOCATION	NOTES
Ski Hoist, aka. <i>The Meat Hook</i>	J-bar	NSW Railways	1938 - 1952	< 122 / ?	Pulpit Rock	2nd ski lift in Aust. Replaced by rope tow
Sponar's	Rope tow	-	1952?	c.46-61 m	Wood Run	Was to operate in '53, but Sponar ill with T.B.
Pulpit Rock	Nutcracker	Hamilton	1953 - 1962	-	-	Rope tow '53 converted to Hamilton nutcracker in 54
Woodrum	Nutcracker	-	1958 - 1962	600 / ?	Chalet Dam-Lit Stillwell	600 metres long, replaced by double chair
Thredbo Valley-Stillwell Restaurant	2-Chair-F	Carlevaro or..	1964 - 1965	4757 / -	-	Abandoned due to strong winds & derailing -
Stillwell Restaurant-Charlotte Pass	2-Chair-F	...Mueller???	1964 - 1965	3323 / -	-	- Combined length = 5 km. Cost £1,200,000!
Pulpit	Poma	Pomagalski	1963 - 1966	-	-	Replaced by a T-bar. Poma moved to Basin
Rope Tow	Portable rope	-	19?? - 2007	-	-	Usually operated between Basin & Kangaroo
Guthries	Poma	Pomagalski	1963 - 2021	580 / 133	-	Due to be replaced with a chairlift depending on DA Approval. Occasionally spelt 'Gutheries' on trail maps
Basin	Poma	-	1968 - present	260 / 43	-	Moved from Pulpit
Pulpit	T-bar	-	1968 - present	310 / 95	-	Replaced a Poma. Was a duplex T-bar in 1970's
Kangaroo Ridge / Kosciusko	3-Chair-F	Pomagalski	1980 - present	670 / 154	-	Name changed 2009?
Kosci Carpet	Carpet	-	2008 - present	-	B/w Basin & Kosci trip	-
Charlotte's Carousel	Carousel	-	2012 - present	-	In front of Chalet	Probably doesn't <i>quite</i> qualify as a lift?
Mt Guthrie Chair (<i>probably</i>)	4-Chair-F	Doppelmayr	2022	400 / ?	Guthries Poma site	Announced 1 July 2020. Will probably be a quad and shorter than the Poma-lift it will replace

2.5 Documentation And Analysis Of Infrastructure

The history of ski lift infrastructure in the Kosciuszko National Park (KNP) comes to life through the remnants of the first ski lift in New South Wales (NSW), a fascinating piece of industrial heritage. Although this relic has weathered the test of time and is no longer in operation, it stands near the top of the current village T-Bar ski lift. Notably, the relic remains reasonably intact, with the stone foundation on which the lift station was constructed serving as a poignant reminder of the past however this does not exist on any register for historical significance.

Any allusions or mentions within this context to the modern ski lift in New South Wales should include explicit clarification that such references are associated with the vicinity of the Pulpit T-Bar and bear no relevance to Guthrie's lift. This clarification is essential to ensure a precise and unambiguous distinction between the two, safeguarding an accurate understanding of their respective historical and geographical significance

Within the KNP Plan of Management (PoM), there is a clear policy that outlines the removal and rehabilitation of certain historical structures, such as the Stillwell restaurant, chairlift station, and chairlift. This policy allows for the retention of some evidence for cultural values if deemed appropriate following cultural heritage assessment.

However, it's essential to note that the Guthries Poma is not mentioned as being of historical significance within this policy, highlighting the varying levels of historical recognition among different elements of the ski lift infrastructure at Charlotte Pass.

Image 7



3. Comparative Analysis of Guthries Poma

3.1 Guthries Poma V Other Ski Lifts at Charlotte Pass

When compared to other ski lifts within Charlotte Pass, Guthries Poma, while serving as a means of transportation for skiers, does not hold a standout position in the resort's history. The remnant of the first ski lift in NSW, while historically interesting, is not the sole feature that has defined Charlotte Pass as a skiing destination. The resort's broader history encompasses other elements, such as the iconic Kosciuszko Chalet Hotel, which have played more prominent roles.

3.2 Guthries Poma V Historic Ski Lifts in KNP

In the broader context of Kosciuszko National Park (KNP), Guthries Poma lacks the unique or distinctive characteristics that set it apart as a symbol of historical significance. While KNP boasts a rich history of skiing infrastructure, such as the chairlift linking the Chalet to the outside world, Guthries Poma does not have any level of prominence.

3.3 Statewide Comparisons

When compared to ski lift infrastructure across the state of New South Wales (NSW), Guthries Poma remains relatively unremarkable in terms of historical significance. Other ski resorts in the state, such as Thredbo and Perisher, have iconic ski lifts, extensive trail networks, and a more prominent place in the history of skiing in NSW.

3.4 Importance in a Local and NSW Context

Guthries Poma, while serving a functional role in the resort's history, is not a standout item of historical significance in comparison to other skiing infrastructure both locally within Charlotte Pass and across the state of NSW. It has no historical significance when evaluated against similar places or objects with greater historical or community associations in the realm of skiing and alpine heritage.

4. ASSESSING SIGNIFICANCE

In assessing the heritage significance of Guthries Poma at Charlotte Pass, it is essential to consider the established criteria used for such evaluations. However, it is crucial to note that, based on thorough and consistent research, there appears to be limited material or evidence that references the significance of the Guthries Poma infrastructure in a compelling manner. Let's explore each of the seven criteria and their relevance to this particular object.

4.1 Historical Significance

Guthries Poma, as a part of the ski lift infrastructure at Charlotte Pass, lacks historical significance when compared to other elements within the region. While it holds historical value in preserving a piece of skiing history, it is not a standout feature in the broader historical narrative of Charlotte Pass or the wider skiing landscape.

4.2 Associative Significance

Guthries Poma does not appear to have strong associative significance, as there is limited documented material that highlights its role in significant events, figures, or moments in the history of skiing at Charlotte Pass. It has mainly served as a functional component of the resort.

4.3 Aesthetic Significance

In terms of aesthetic significance, Guthries Poma, while contributing to the visual landscape of Charlotte Pass, does not hold the same aesthetic appeal as the alpine terrain or iconic architectural structures like the Kosciuszko Chalet Hotel.

4.4 Scientific Significance

There is no evident scientific significance associated with Guthries Poma. Unlike specific geological features or research sites, it is primarily a man-made structure designed for recreational purposes.

4.5 Social Significance

Guthries Poma, while providing transportation for skiers and contributing to the skiing experience at Charlotte Pass, does not have the same level of social significance as other communal gathering places, lodges, or event venues within the resort.

4.6 Rarity or Representativeness

Guthries Poma is not particularly rare or representative when compared to other ski lift infrastructure. While it may be one of the ski lifts at Charlotte Pass, there is limited evidence to suggest that it holds a unique place among similar structures in the region.

4.7 Potential Research Significance

There is no potential for Guthries Poma to be of research significance, particularly in studies focused on the evolution of ski lift technology

In conclusion, while Guthries Poma certainly contributes to the skiing experience at Charlotte Pass, it does not exhibit strong heritage significance based on the established criteria for assessing heritage. Its role in the resort's history appears relatively subdued in comparison to other elements and structures, and it lacks documented material or evidence that would categorically establish its heritage significance.

5. LEVEL OF HERITAGE SIGNIFICANCE

Upon a comprehensive analysis of the heritage significance of Guthries Poma at Charlotte Pass Snow Resort, it becomes evident that this particular object does not hold any significant heritage value based on the established criteria.

In alignment with the threshold indicators and questions under each criterion, the assessment indicates an insignificant level of heritage significance for Guthries Poma.

5.1 Level of Heritage Significance: Local (within a local context)

The assessment of heritage significance of Guthries Poma places it at a local level within the context of Charlotte Pass Snow Resort. There is no historical value in preserving it as a piece of skiing history, it does not attain the threshold indicators required for broader state significance.

The lack of strong historical, associative, aesthetic, social, scientific, and rarity-based significance, combined with the absence of documented material highlighting its role in significant events, figures, or moments in the history of skiing at Charlotte Pass, contributes to the determination of a no local level of significance.

In conclusion, Guthries Poma is primarily functioning as a means of transportation for skiers. It is important to acknowledge that not all objects or places necessarily possess significant heritage value, and Guthries Poma, based on the available research and assessments, does not reach the threshold for any heritage significance.

5.2 A Guide for Analysis Gradings of Significance

In the process of assessing the heritage significance of Guthries Poma at Charlotte Pass, *Table 2* emerges as an invaluable resource and guide. This table, which outlines the threshold justifications, serves as a structured framework for the analysis of heritage significance.

While the assessment ultimately places Guthries Poma at a little level of significance, it is this table that aids in evaluating the specific criteria and their respective gradings. *Table 3* allows for a systematic and thorough exploration of each criterion, ensuring a comprehensive understanding of the object's heritage value.

By referencing *Table 2*, we gain insight into the specific aspects that contribute to the level of heritage significance attributed to Guthries Poma. It provides clarity and structure, facilitating a well-informed assessment that aligns with established heritage criteria.

In essence, *Table 2* acts as a guide that helps us navigate the multifaceted dimensions of heritage significance, ensuring that our evaluation is both comprehensive and well-informed.

Table 2

Assessing Heritage Significance – Department of Planning May 2023

Gradings of significance	
Refer to this table and terminology as a guide for analysing gradings of significance for each individual element or a place or object.	
Grading	Justification
Exceptional	Rare or outstanding element directly contributing to a place or object's significance.
High	<p>High degree of original fabric.</p> <p>Demonstrates a key element of the place or object's significance.</p> <p>Alterations do not detract from its significance.</p>
Moderate	<p>Altered or modified elements.</p> <p>Elements with little heritage value, but which contribute to the overall significance of the place or object.</p>
Little	<p>Alterations detract from its significance.</p> <p>Difficult to interpret.</p>
Intrusive	Damaging to the place or object's significance.

Under the State Environmental Planning Policy (SEPP) for Kosciuszko National Park – Alpine Resorts (2007), heritage items are afforded special protection. Guthries Poma, however, lacks heritage value as it is not listed as a heritage item under this policy. The SEPP defines conditions under which development consent is required for heritage items, but Guthries Poma does not fall within its scope, with The Kosciuszko Chalet Hotel at Charlotte Pass being the sole recognised heritage item.

6. STATEMENT OF HERITAGE SIGNIFICANCE

The Guthries High Speed Poma at Charlotte Pass Snow Resort, while an integral part of the ski lift infrastructure, is assessed to have no heritage significance.

6.1 Historical Significance

Guthries Poma was built in 1963 as one of three lifts to cater to the growing number of skiers at Charlotte Pass. However, when compared to other elements of the resort's history, such as the iconic Kosciuszko Chalet Hotel, Guthries Poma does not hold any level of historical significance.

6.2 Associative Significance

The lift does not appear to have strong associative significance. Limited documented material highlights significant events, figures, or moments in the history of skiing at Charlotte Pass however not have taken place in conjunction with Guthries Poma. It has primarily served as a functional component of the resort with access to terrain.

6.3 Aesthetic Significance

In terms of aesthetic significance, while it contributes to the visual landscape of Charlotte Pass, Guthries Poma does not hold the same aesthetic appeal as the alpine terrain or iconic architectural structures like the Kosciuszko Chalet Hotel.

6.4 Social Significance

Guthries Poma, while providing transportation for skiers and contributing to the skiing experience at Charlotte Pass, does not have the same level of social significance as other communal gathering places, lodges, or event venues within the resort.

6.5 Rarity or Representativeness

Guthries Poma is not particularly rare or representative when compared to other ski lift infrastructure. It may be one of the ski lifts at Charlotte Pass, but there is limited evidence to suggest that it holds a unique place among similar structures in the region.

6.6 Potential Research Significance

There is no potential for Guthries Poma to be of research significance, in studies focused on the evolution of ski lift technology or the history of skiing in Australia.

6.7 State of Significance Local (within a local context)

In conclusion, the heritage significance of Guthrie's Poma, situated at a local level within the context of Charlotte Pass, deserves special consideration. It plays a crucial role in contributing to the skiing experience at the resort, offering valuable access to the terrain it serves. This fundamental function, highly prized by skiers and enthusiasts, remains an enduring feature with the introduction of the new lift.

While Guthrie's Poma holds a distinct place in the local heritage narrative, it does not exhibit a robust heritage significance when compared to other elements within the region. The absence of prominent historical, associative, aesthetic, social, scientific, and rarity-based significance, along with the scarcity of documented material highlighting its role in significant events, figures, or moments in the history of skiing at Charlotte Pass, collectively underscores its localised significance.

This statement of heritage significance provides a valuable framework for understanding the place of Guthrie's Poma within the heritage landscape of Charlotte Pass. It acknowledges the historical value and context of this feature while recognising that not all heritage objects necessarily possess a significant heritage value.

Furthermore, it is essential to underscore that any local-level significance attributed to Guthrie's Poma will be effectively preserved and perpetuated with the introduction of the new lift, ensuring the ongoing accessibility to the terrain it serves and the continuation of its role in enhancing the skiing experience for visitors and enthusiasts alike.

7. CONCLUSION

In our comprehensive evaluation of the Guthries High-Speed Poma at Charlotte Pass Snow Resort, it becomes evident that this lift infrastructure possesses no heritage significance. This determination emerges from a meticulous examination of its historical, associative, aesthetic, social, scientific, rarity-based, and research-based importance, as guided by established heritage criteria. Our primary objective has been to address the fundamental question: 'What is the significance of this lift?' The resulting conclusion succinctly conveys its specific heritage value, which is insubstantial.

Constructed in 1963 to accommodate the growing number of skiers at Charlotte Pass, Guthries Poma it does not attain the level of historical significance achieved by other notable elements in the area, such as the iconic Kosciuszko Chalet Hotel. Furthermore, it's important to recognize that it's a 60+ year-old piece of infrastructure that has reached the end of its life and requires replacement.

Our evaluation reveals that Guthries Poma does not exhibit strong associative significance. Limited documented material highlights its minimal role or mention in significant events, figures, or pivotal moments in the history of skiing at Charlotte Pass. Its primary function primarily centres on providing essential transportation and enhancing the skiing experience within the resort.

In terms of aesthetic significance, while the Poma contributes to the visual landscape of Charlotte Pass, it does not possess the same level architectural grandeur of the Kosciuszko Chalet Hotel.

While Guthries Poma undoubtedly plays a crucial role in facilitating transportation for skiers and enhancing the skiing experience at Charlotte Pass, it does not carry the same level of social significance as other communal gathering places, lodges, or event venues within the resort.

Guthries Poma's claim to rarity or representation is limited when compared to other ski lift infrastructures within NSW or Australia. Although it stands as one of the ski lifts at Charlotte Pass, there is no evidence to suggest that it holds a unique or distinctive place among similar structures in the broader region.

There is no potential for Guthries Poma to achieve research significance, within the evolution of ski lift technology or the broader history of skiing in Australia.

Drawing from the comprehensive analysis conducted in this report, it is imperative to underscore that the conclusions align with the outcomes of previously provided assessments, including the NGH Environmental Report from 2007 and the Statement of Environmental Effects. Both of these detailed examinations resoundingly reflect the consensus that Guthries High-Speed Poma does not hold any historical heritage significance.

These collective findings reaffirm the intrinsic nature of Guthries Poma as a piece of skiing infrastructure, constructed over 60 years ago to cater to the growing number of skiers at Charlotte Pass. It is a functional component, facilitating access to the skiing terrain, but it falls short of demonstrating strong historical heritage significance when weighed against other prominent elements in the region. The conclusion remains consistent: Guthries High-Speed Poma does not emerge as a historical heritage object of substantial note, according to the historical assessments conducted in previous reports.

In summary, the heritage significance of Guthries Poma, or rather the lack thereof, is localised within Charlotte Pass. It contributes to the skiing experience at the resort, but when compared to other elements within the region, it does not exhibit any heritage significance. The dearth of pronounced historical, associative, aesthetic, social, scientific, and rarity-based significance, coupled with the limited documented material highlighting its role in significant events or figures in the history of skiing at Charlotte Pass, aligns it with lift of no heritage value.

In light of our assessment, Guthries Poma's heritage significance has no value, and represents a 60+ year-old piece of infrastructure that has reached the end of its life and requires replacement.

REFERENCES

Department of Planning (2023), *Assessing Heritage Significance – Department of Planning May 2023*

NPWS (1998), *Ski Resorts Heritage Study*

Walkom, R (2022) *Skiing off the Roof: Thrills, spills, conquests and catastrophes at Charlotte Pass – a fascinating Kosciuszko Alpine History*

NGH Environmental /Vantage Environmental Management (2008) *Charlotte Pass Village Environmental Report*

nghheritage (2007) *Heritage Impact Assessment: Wood Stave Pipe, Smiggin Holes*. Prepared for the NSW Department of Planning.

NPWS (2006) *Kosciuszko National Park Plan of Management*. NSW National Parks and Wildlife Service

DoP (2007) *State Environmental Planning Policy (Kosciuszko National Park – Alpine Resorts)* 2007. Department of Planning, Sydney, NSW

CPSR, *Aboriginal Cultural Heritage Assessment*

<https://www.skiresort.info>

<https://www.australianmountains.com>

<https://maps.six.nsw.gov.au/>

<https://www.sasc-aus.com/sasc-history>

<https://perisherhistory.org.au>

<https://ssdavies.net>

<https://www.openstreetmap.org>